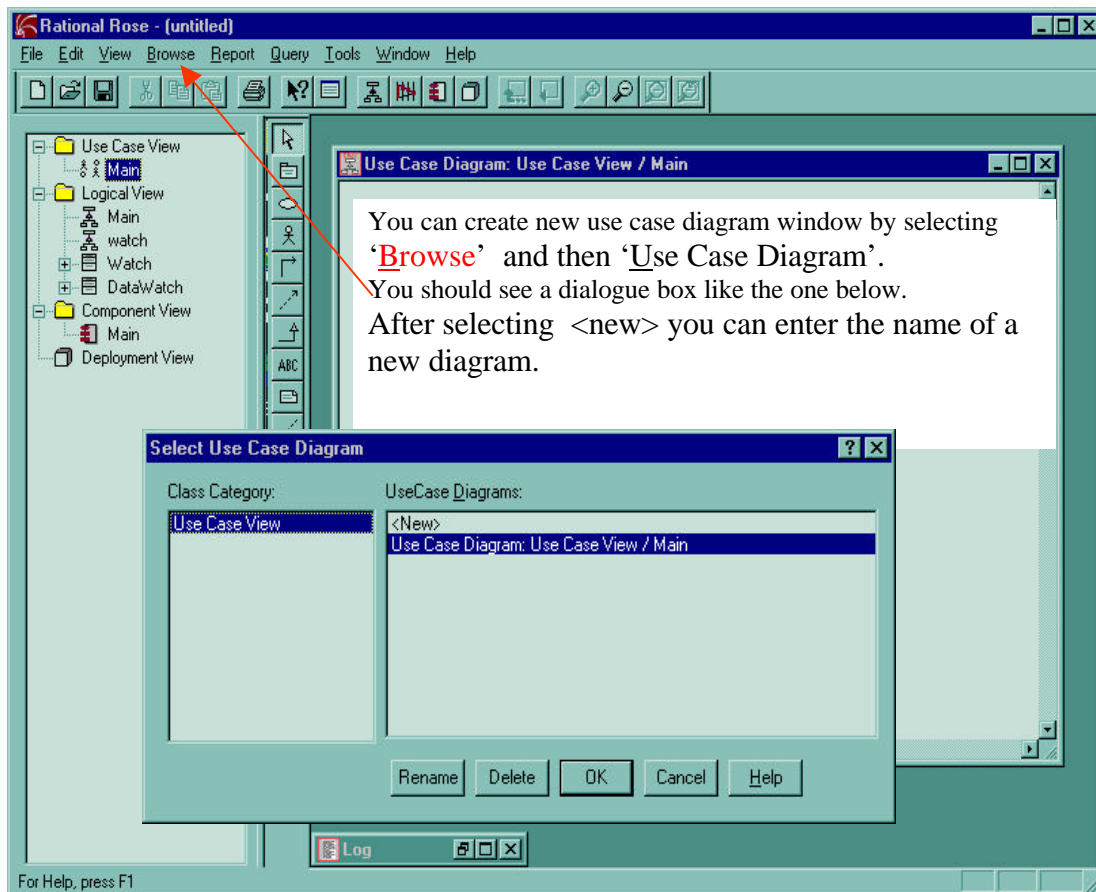
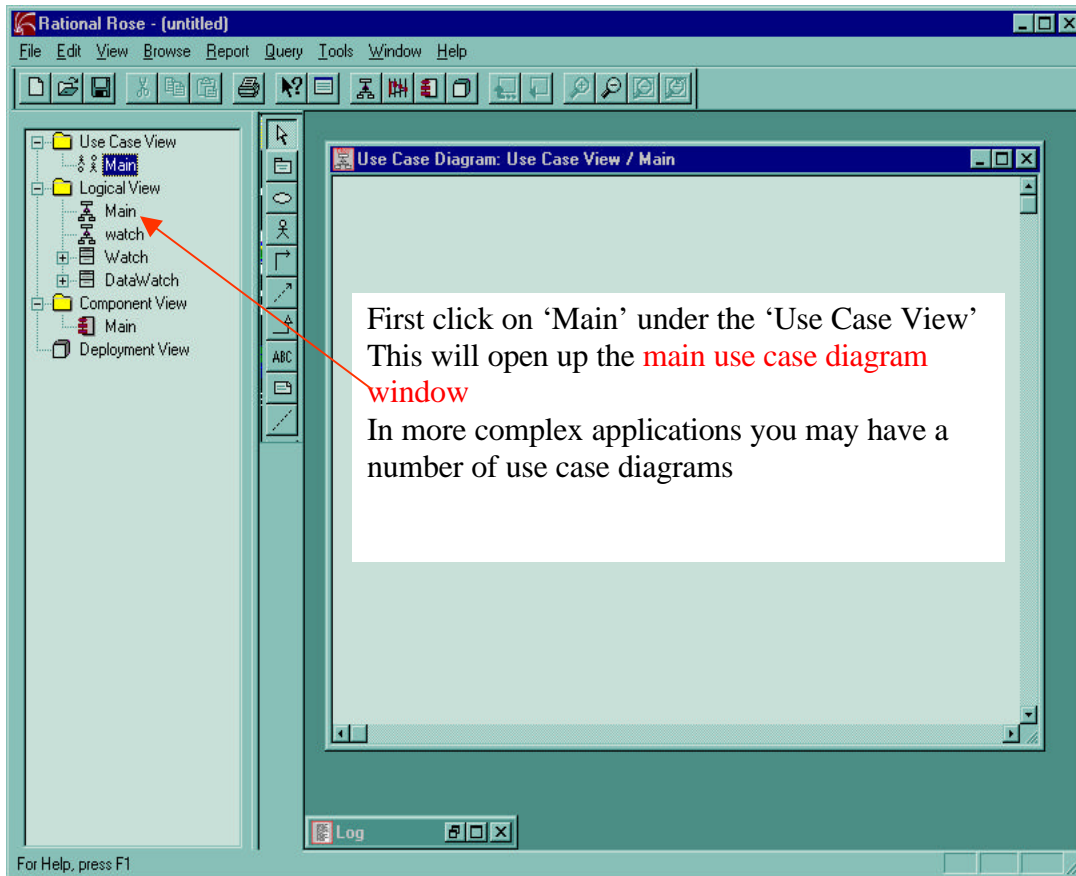
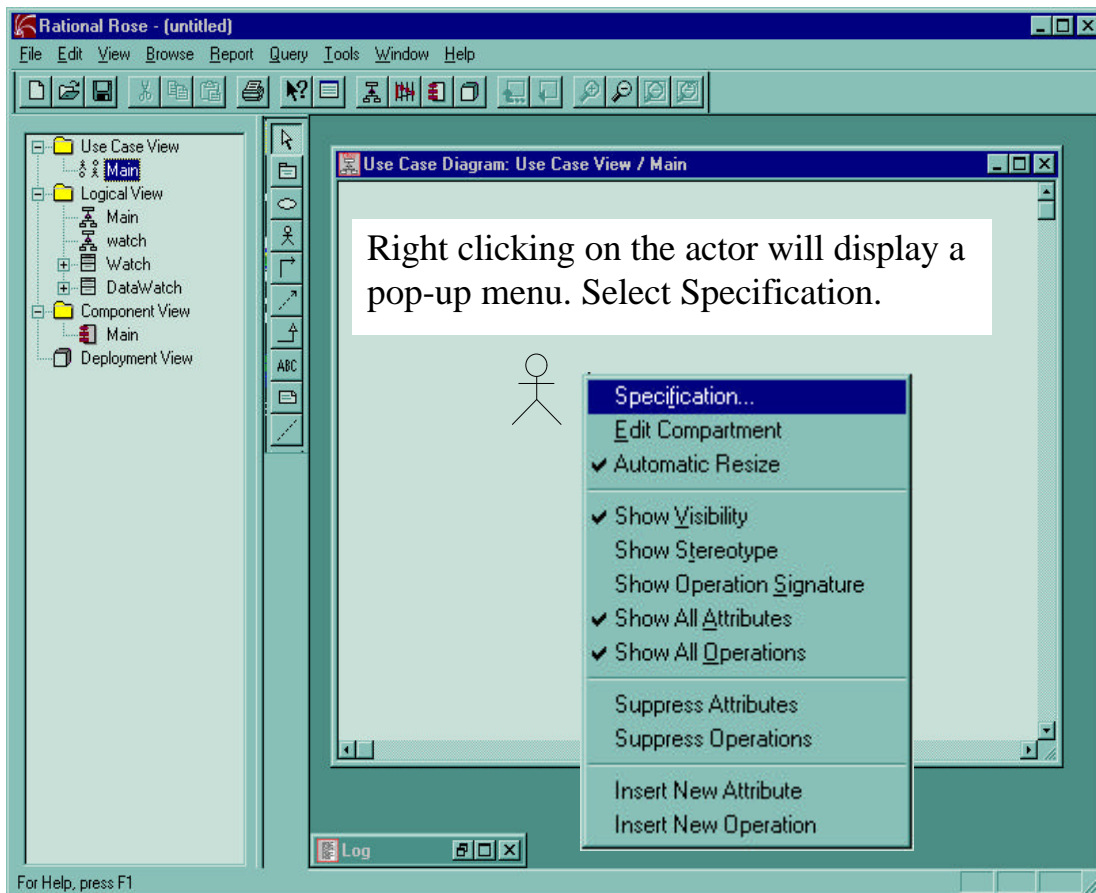
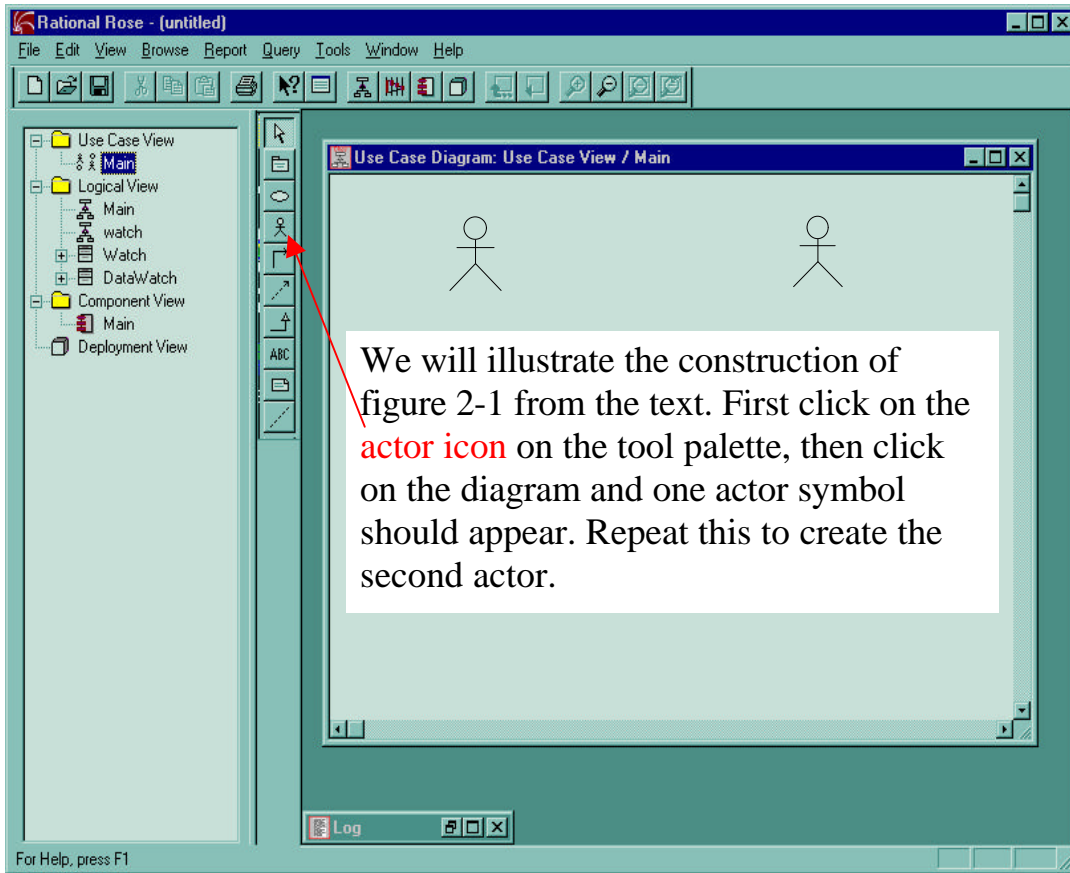
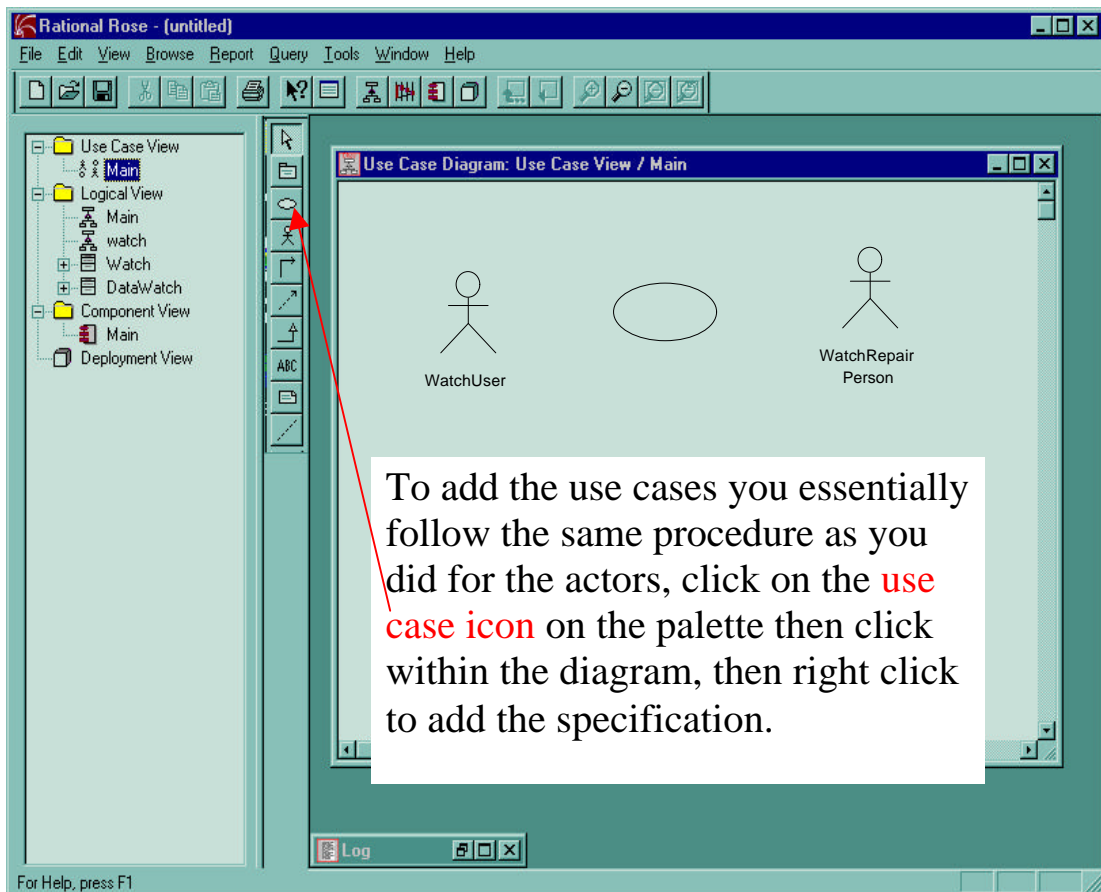
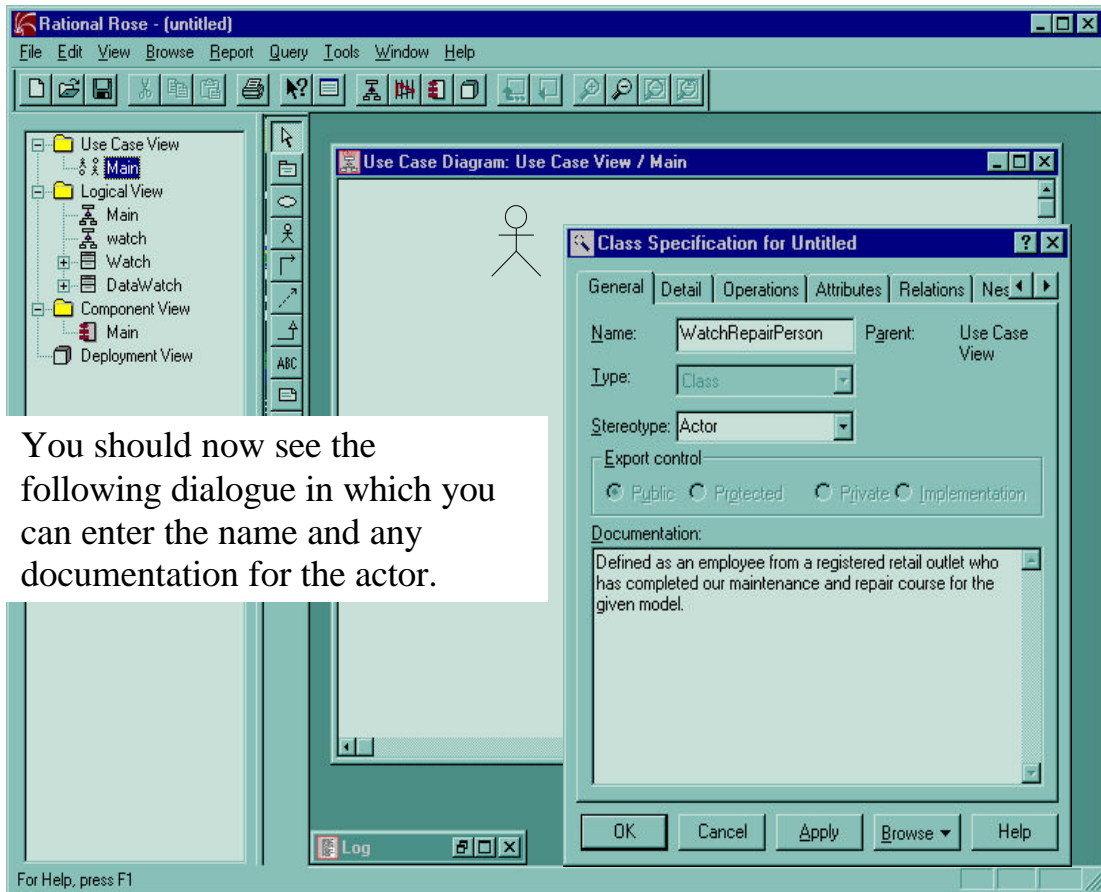


How to construct a use case diagram in Rational Rose SE







Rational Rose - (untitled)

File Edit View Browse Report Query Tools Window Help

Use Case Diagram: Use Case View / Main

Use Case View

- Main
- Logical View
 - Main
 - watch
 - Watch
 - DataWatch
- Component View
 - Main
- Deployment View

WatchRepair Person

ChangeBattery

SetTime

ReadTime

WatchUser

Log

For Help, press F1

To connect the actors to the use cases, select **unidirectional association**. Then click on the actor, hold down the mouse button and drag the mouse arrow to the appropriate use case.

Rational Rose - (untitled)

File Edit View Browse Report Query Tools Window Help

Use Case Diagram: Use Case View / Main

Use Case View

- Main
- Logical View
 - Main
 - watch
 - Watch
 - DataWatch
- Component View
 - Main
- Deployment View

WatchRepair Person

SimpleWatch

ChangeBattery

SetTime

ReadTime

WatchUser

For Help, press F1

You can complete the diagram by using a package to represent the system boundary. You can resize any object by clicking on it and then dragging on one of the corners with the mouse. You can delete any object by selecting it and pressing the delete key. Once you complete a diagram you go to the edit menu, select all, select copy and then paste into your rtf file.